



**International Gold Mining Limited**

# 916 – 925 West Georgia Street, Vancouver, BC V6C 3L2 Canada  
Tel. 604.687.0775 Fax. 604.687.0710 www.ingoldmin.com

**NEWS RELEASE**

June 12, 2007

**Symbol: IGL-TSXV**

For Immediate Dissemination

**International Gold Joint Ventures  
Into Yandal Greenstone Belt**

**INTERNATIONAL GOLD MINING LIMITED (IGL-TSXV)** (the “Company”) is pleased to announce that it has entered into a formal joint venture agreement covering five contiguous prospecting licences, totalling approximately 10 km<sup>2</sup>, at Kenden Well located some 70km East of Wiluna, Western Australia.

The project tenements are located to the South and along strike from the multi-million ounce gold (Au) Nimary-Jundee deposit which is located within a highly prospective major structural corridor (see Fig.1). The geology trends Northwest–Southeast and also occurs within the Kenden Well Project area which is located within the Yandal Greenstone belt of Western Australia.

After a century of virtual neglect, exploration in the Yandal greenstone belt of the Yilgarn Craton of Western Australia has yielded resources in excess of 13 M oz of gold since the 1990s. Success has come from a combination of conceptual geological models, surface prospecting, understanding the weathering environment, and systematic drilling. Gold resources and past production at major deposits include Bronzewing (4 M oz), Jundee (5 M oz) Mt. McClure (1 M oz) and Darlot (3 M oz), some of which was produced before 1990. All major deposits are hosted by Fe-rich mafic rocks, and mineralization displays a combination of different orientations and morphologies.

**Exploration Potential – Red Lake Target Area**

Although some areas require some further follow up, shallow geochemical definition, the target area “Red Lake” has sufficient information to outline a very exciting target in which deeper drilling is required.

These gold values outlined at Red Lake by previous limited shallow drilling show a classic leach profile signature, and the depth projection remains untested; however remnant mineralisation has been intersected and the following results have been recorded.

- 2 metres @ 7.6 g/t;
- 8 metres @ 3.9 g/t;
- 2 metres @ 8.5 g/t;
- 8 metres @ 2.4 g/t;
- 8 metres @ 4.3 g/t; and
- 10 metres @ 4.2 g/t.

The Red Lake target area has an indicated width of 50 metres and a strike length in excess of one kilometre, the company has budgeted six 200m holes to test the down dip extension, the programme will be reviewed after the results have been received.

### **JV Agreement**

Under the terms of the JV agreement, International Gold Mining Limited will acquire the exclusive right to earn an aggregate of 51% Participating Interest, including a 51% interest in the tenements by:

- Paying the owner AUS\$25,000 by way of reimbursement of past expenditure on the Tenements
- Contributing the sum of AUS\$150,000 on exploration expenditure during the Earning Period.

International Gold Mining Limited will have the right to earn a further aggregate of 24% Participating Interest by the expenditure of a further AUS\$300,000 to take it to 75% ownership.

Following the earning of 75% ownership, International Gold Mining Limited will have the right to acquire the remaining 25% for the sum of AUS\$1,000,000 leaving the initial owner with a net smelter royalty of 2%.

At all stages of the Earning Period, International Gold Mining Limited will hold the management rights to all exploration.

### **Qualified Person**

Mr. Nick Revell BSc, a member of AusIMM, and a Company director, is a Qualified Person as defined in National Instrument 43-101- Standards of Disclosure for Mineral Projects ("NI 43-101"), in charge of the exploration on the Kenden Well project.

On behalf of the Board of Directors

INTERNATIONAL GOLD MINING LIMITED

*"Nick Revell"*

---

Nick Revell, Director

For further information, please contact:

#### **Investor and Media Inquiries:**

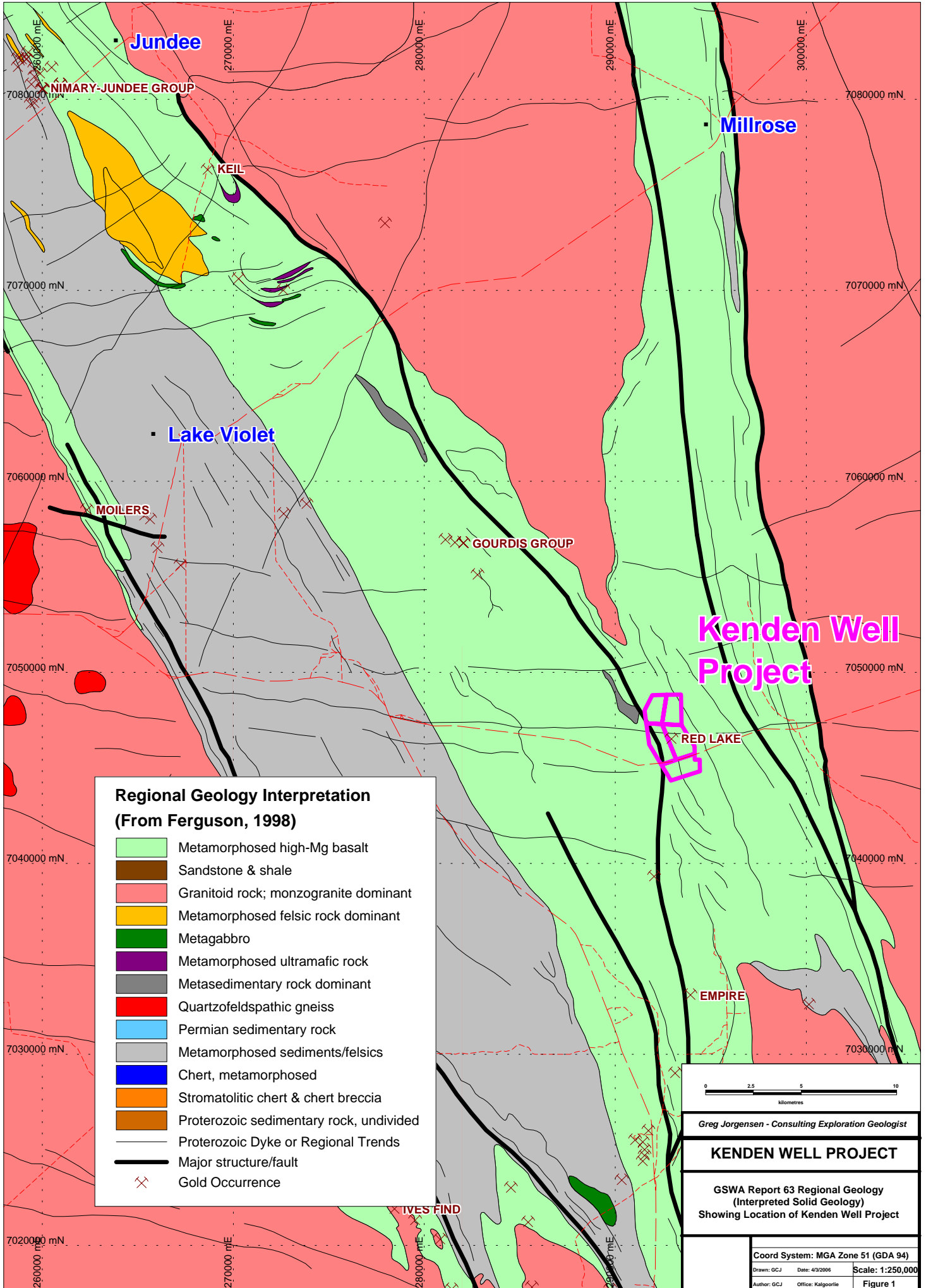
Spiro Kletas, Longview Capital Partners Inc.

Tel: (604) 681-5755

Email: skletas@longviewcp.com

---

**THE TSX VENTURE EXCHANGE DOES NOT ACCEPT RESPONSIBILITY FOR THE ADEQUACY OR ACCURACY OF THIS RELEASE**



**Regional Geology Interpretation  
(From Ferguson, 1998)**

- Metamorphosed high-Mg basalt
- Sandstone & shale
- Granitoid rock; monzogranite dominant
- Metamorphosed felsic rock dominant
- Metagabbro
- Metamorphosed ultramafic rock
- Metasedimentary rock dominant
- Quartzofeldspathic gneiss
- Permian sedimentary rock
- Metamorphosed sediments/felsics
- Chert, metamorphosed
- Stromatolitic chert & chert breccia
- Proterozoic sedimentary rock, undivided
- Proterozoic Dyke or Regional Trends
- Major structure/fault
- Gold Occurrence

0 2.5 5 10  
kilometres

Greg Jorgensen - Consulting Exploration Geologist

**KENDEN WELL PROJECT**

GSWA Report 63 Regional Geology  
(Interpreted Solid Geology)  
Showing Location of Kenden Well Project

Coord System: MGA Zone 51 (GDA 94)	
Drawn: GCJ	Date: 4/3/2006
Author: GCJ	Office: Kalgoorlie
<b>Figure 1</b>	